

### Construction

Close-coupled self-priming shallow well jet pumps with built-in ejector. Version with pump casing and lanter bracket in cast iron. (the pumps are supplied fully painted).

### Applications

- For drawing water out of a well.
- As pressure boosting pump for central water systems with low pressure (follow local specifications if increasing network pressure).
- For clean liquids or slightly dirty surface water.
- For garden use.
- For washing with a jet of water.

### Operating conditions

- Liquid temperature up to 40 °C.
- Ambient temperature up to 40 °C.
- Maximum permissible working pressure up to 10 bar.
- Continuous duty.

### Motor

- 2-pole induction motor, 50 Hz (n = 2900 rpm).
- single-phase 230 V ± 10%, with thermal protector.
- Capacitor inside the terminal box.
- Insulation class F.
- Protection IP 54.

### Materials

- Pump body: Cast iron
- Motor support: Cast iron
- Impeller: Brass
- Winding wire: Copper
- Shaft:Stainless steel
- Mechanical seal: Stainless steel

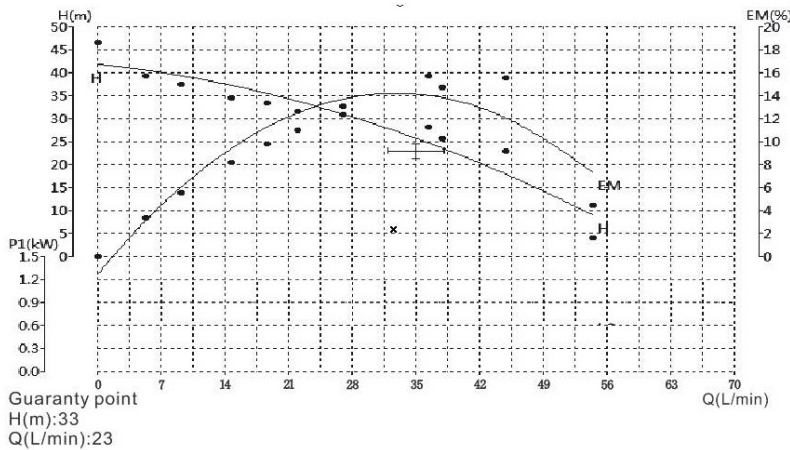
### Special features on request

- Other voltages.
- Frequency 60 Hz (as per 60 Hz data sheet).
- Protection IP 55.
- Special mechanical seal

## JET-H Self-Priming Jet Pumps



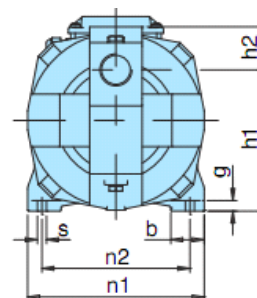
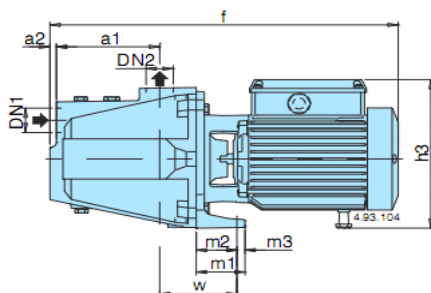
### Characteristic curves n ≈ 2900 rpm



### Performance for suction lift Hs = 1 m n ≈ 2900 rpm

Q m³/h	0.25	0.5	1	1.5	2	2.5	3	3.5	4	4.5	5
L/min	4.1	8.3	16.6	25	33.3	41.6	50	58.3	66.6	75	83.3
H(m)	42	41	40	36	32	28	24				

### Dimensions



TYPE	DN <sup>1</sup>	DN <sup>2</sup>	mm														
			a1	a2	f	h1	h2	h3	m1	m2	m3	n1	n2	b	s	w	g
JET-H	G1	G1	127	8	430	150	43	207	60	52	8	185	155	35	9.5	100	11